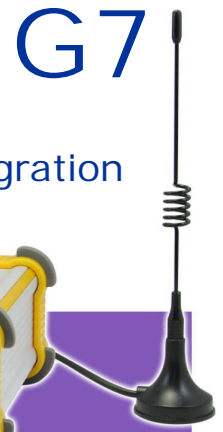


Smart Wireless Sensor



G7 creates the **IoT** platform of sensor data exchange and integration



64 wireless sensors each station

* temperature, humidity, analog sensors, digital alarm

* Modbus RS485, onboard relay switch

Windows / iOS / Android Monitoring App

Up to 5 years battery operation or solar power

1200 meter wireless distance



System Integration

- ▶ TCP Modbus support for BMS integration
- ▶ API dll for third party software programming
- ▶ REST API for user web portal development

Support

*4-20mA, 0-5V sensor
Modbus RS485*

Wireless Sensor

- * temperature & humidity
- * analog sensor 4-20mA, 0-5V
- * digital alarm, Modbus RS485
- * average 2~3 year battery life
- * transmission interval (5s ~ 4hrs)

Free App

- Easy to use G7 Client Apps
- * Client for Win 10, iOS & Android
- * Data Receiving Centre Software
- * Setup Software
- * Support TCP Modbus

Professional

- Sensor high/low alarm levels
- Battery Low Alert
- Alert user over LAN or Internet
- Email Alarm by G7 Client
- Alarm Triggered Relay Switch

G7 makes factory, storage and farming smarter by the power of IoT.



Agriculture & Farming

Recording and analysis of temperature, humidity situation in greenhouse or farm where cabling is difficult or impossible.
Long distance 1.2km is ideal in agriculture.



Tank & Cold Storage

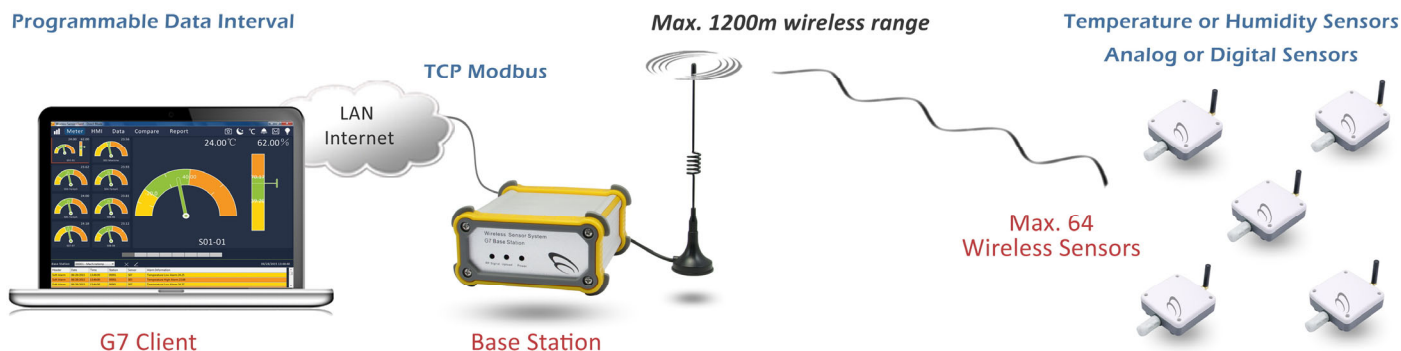
Diesel Level & Temperature Monitoring are critical in gas tanks and cold food storage.
Alert user wirelessly when oil level or temperature is high/low.



Pharmacy Automation

Keep recording of temperature and humidity for audit and analysis.
Hassle free installation without cabling.
Instant alarm on temperature.

How user receives the sensor data?



G7 Wireless Sensor sends real time data wirelessly through radio wave to the Base Station.

Base Station collects the measurement of all wireless sensors, and uploads to central computer.

Both station and sensor are easily configured by setup software via USB port.

Wireless Sensor

Temperature Sensor (G7-T2)

Temperature: -55 ~ 125 °C (+/- 0.5 °C)

Combo Sensor (G7-H2 / H3)

Temperature: -40 ~ 125 °C (+/- 0.3 °C)

Humidity: 0 ~ 100%RH (+/- 2%)

Analog Sensor (G7-AD) 4-20mA / 0-5VDC input

Digital Alarm (G7-D2) On/Off Dry Contact

Modbus (G7-MB) RS485

Optional: (G7-R) Onboard Relay

Upload Interval: 5s ~ 4 hours

Wireless Distance: 1200 meter (unblock)

Sensor ID: User programmable 5 digits

RF Wireless: 433/868/915MHz

RF Power: < 20dBm

Operation Rating: 80mA (data transmission)

Standby Rating: ~3.0uA (sleep mode)

Operating Voltage: 2.5~3.6V DC

Battery: 3400mAh

Battery Life: ~ 3 year (1hr upload)

Extended Battery: 14000mAh

Battery Life: ~ 10 year (1hr upload)

Dimension: 80 x 80 x 28 mm

Operating Temperature: -20 ~ 75 °C

Base Station

Upload Interval: 5s ~ 4 hours

Protocol: TCP/IP Network

TCP Modbus support

Network Port: 10/100M Ethernet

Fixed & Dynamic IP

Upload Central Server: Fixed IP & DDNS

Industrial Support: Modbus TCP protocol

Internal Memory (G7-BS+): 4MB (~30000 records)

RF Wireless: 433MHz, 4.8Kbit/s

RF Address/Band: 255/15

Operating Voltage: 5V DC

Rating: < 1A

Operating Temperature: -15 ~ 75 °C

Dimension: 110 x 95 x 45 mm



Base Station
G7-BS
G7-BS+ (4MB)



EMC Compliance: EN300220, EN301489, EN60950

Certificate: FCC, RoHS

◆ Receive Wireless Data from sensors

◆ Upload data via LAN/Internet to central

Free Software

G7 Client Lite for Windows (Desktop & Touchscreen), iPad, iPhone & Android Phone

Receives data from Base Station over LAN or Internet

Displays both live, historical and statistical data in graphics

Data records are saved into local storage for comparison or report generation

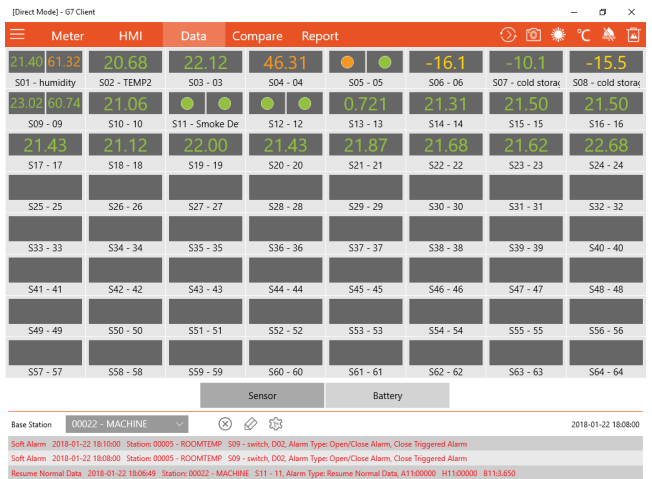
Data can be exported as csv or SQLite for third party software data analysis

Dashboard display mode gives an overview of 64 sensors reading on one single screen

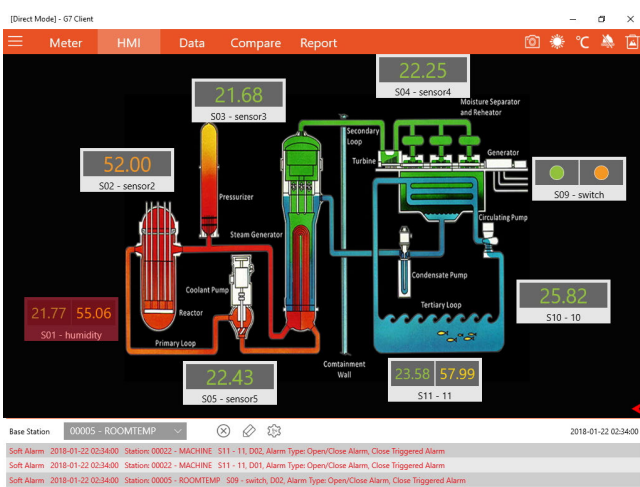
Meter



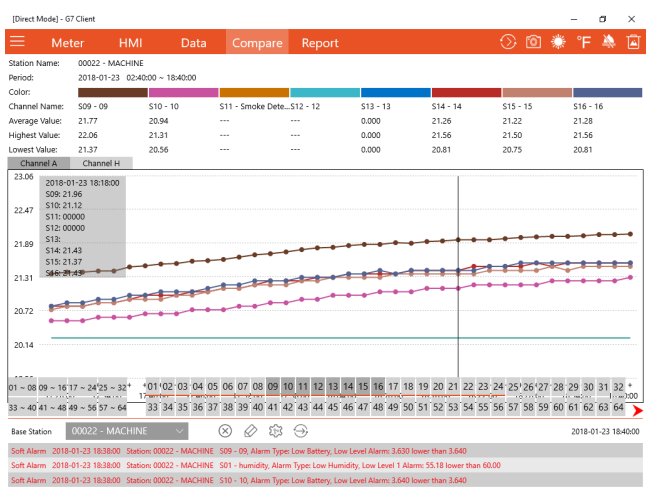
Dashboard



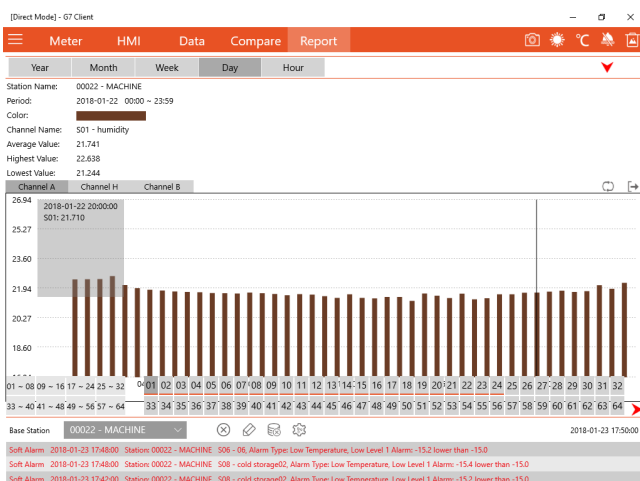
HMI



Line Chart



Statistic Report



Alarm

On Screen Alert

User is alerted when high/low temperature, humidity, analog level, digital alarm or low battery voltage is triggered.

Alarm Email

G7 Client for Win10 sends alarm up to 3 email addresses.

Wireless Temperature Sensor (-55 ~ 125 °C)

Specification

Range:	-55 ~ 125 °C
Accuracy:	+/- 0.5 °C
Steel Probe:	50mm or 100mm water submersible
Cable:	2m or customized length
PVC Case:	waterproof



G7-T2

- ◆ Temperature Probe, 2m cable

Standard Battery

Battery Capacity:	3.6V, 3400mAh
Battery Life:	> 3 years (upload: 30 min)
Dimension:	80 x 80 x 28 mm

G7-DT

- ◆ 2 x Temperature Probe



G7-TX

- ◆ Temperature Probe with 100mm steel housing



Extended Battery

Battery Capacity:	3.6V, 14000mAh
Battery Life:	> 10 years (upload: 30 min)
Dimension:	115 x 90 x 55 mm

Longer Operation Time

G7-T2Ex

- ◆ Temperature Probe with 50mm steel housing
- ◆ 2m cable



G7-TXEx

- ◆ Temperature Probe with 100mm steel housing



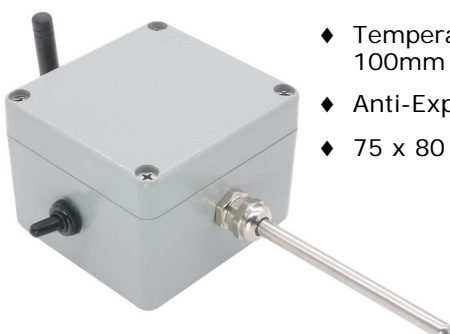
Specific Application

Oil / Diesel Temperature Monitoring
Anti-corrosive
Anti-explosive

Harsh Operation Environment

G7-ATX

- ◆ Temperature Probe with 100mm steel housing
- ◆ Anti-Explosive metal case
- ◆ 75 x 80 x 43 mm



G7-T2C

- ◆ Temperature Probe with 50mm steel anti-corrosive housing (oil/diesel submersible)



- ◆ Anti-corrosive cable, 2m (oil/diesel submersible)

Wireless Temperature Humidity Sensor (-40 ~ 125 °C, 0 ~ 100%RH)

Specification

Temperature:	-40 ~ 125 °C, +/-0.3 °C
Humidity:	0 ~ 100%RH, +/- 2%
Probe:	water resistant
Cable:	1m or customized length
PVC Case:	waterproof

Standard Battery

Battery Capacity:	3.6V, 3400mAh
Battery Life:	> 3 years (upload: 30 min)
Dimension:	80 x 80 x 28 mm

G7-H3

- ◆ Temperature & Humidity Sensor, waterproof probe



G7-H2

- ◆ Temperature & Humidity Sensor, 1m cable



G7-S2 / H4 / H5 / H6



- ◆ Water resistant probe
- ◆ 1m cable
- ◆ Outdoor application

Extended Battery

Battery Capacity:	3.6V, 14000mAh
Battery Life:	> 10 years (upload: 30 min)
Dimension:	115 x 90 x 55 mm

G7-H3Ex

- ◆ Temperature & Humidity Sensor, waterproof probe



G7-S2 / H4 / H5 / H6



G7-H2Ex

- ◆ Temperature & Humidity Sensor, 1m cable



Wireless Sensor - onboard relay

Relay Output:	30VAC/1A, 350VAC/0.12A
State:	Normal Open
Alarm Triggered:	Relay Output Close
Relay Time Lapse:	0 ~ 255 s

Operation Flow

When temperature or humidity is higher/lower than preset value:

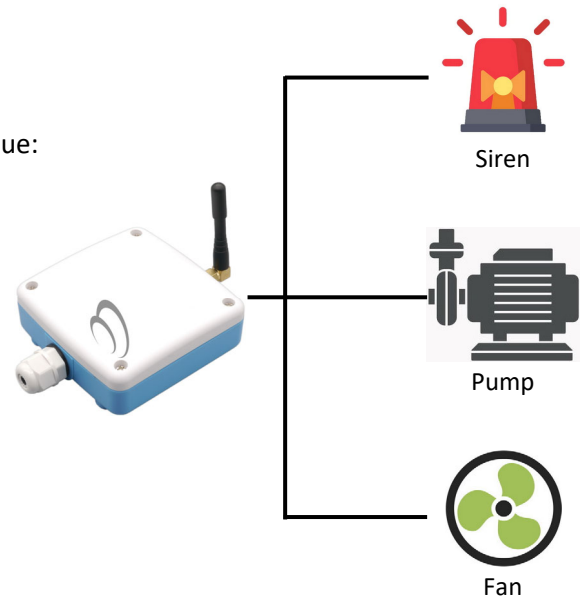
1. Wireless Sensor sends alarm data to base station
2. Base Station sends alarm to central server
3. Wireless Sensor turn on the onboard relay

Wireless Sensor (onboard relay)

- * Relay Switch is integrated in Wireless Sensor
- * Relay is triggered on by alarm.
- * Alarm can be temperature or humidity .

Wireless Sensor (onboard relay)

- * G7-T2-R Wireless Temperature Sensor
- * G7-H2-R Wireless Temperature Humidity Sensor



Application Example

No Cabling, Simple Installation

Sensors High & Low Level Alarm

Siren is turn on when temperature or humidity is higher or lower than preset values (G7-H2-R)

Other equipment e.g. fan can be turn on when temperature is high (G7-T2-R)

Base Station receives alarm at the same time

User will be alerted by G7 Client remotely



Industrial High Precision

Wireless Temperature & Humidity Sensor

Digital Sensor:	AM2315C
Temperature:	-40 ~ 80 °C (+/- 0.3 °C)
Humidity:	0 ~ 100%RH (+/- 2%RH)
Signal:	Digital I2C
Probe:	1m extended cable
Battery Capacity:	3.6V, 3400mAh (G7-HA)
Battery Capacity:	3.6V, 14000mAh (G7-HAEx)



Wireless Sensor - Analog Sensors

Analog Sensor:	4-20mA or 0-5VDC signal input
Battery:	3.6V, 14000mAh
Operation Period:	> 5 years (upload: 30 min)
Internal Power Output:	12 or 24VDC for sensor with max. 40mA rating

G7-AD Wireless Analog Sensor supports analog sensors with 4-20mA or 0-5VDC input.

Low Power Design

Micro-controller supports sleep mode for years long operation in battery.

Internal Power Output

It provides on board voltage output 12VDC for external analog sensors in different applications e.g. soil humidity sensor for agriculture.

Warm Up Time

Stabilize external analog sensors reading before capturing data.

- ▶ High Capacity 3.6V battery (14000mAh)
- ▶ Operation Period ~ 5 years (excluding sensor)

Battery Option
(G7-AD)

Wireless Soil Temperature Humidity Sensor



Wireless Level Sensor



Wireless pt100 Temperature Sensor (food safety)



Wireless Sensors for Agriculture

Wireless Soil Moisture Sensor

Wireless Soil EC Sensor

Wireless Soil pH Sensor

Soil Moisture Probe

Range:	0 ~ 100%
Accuracy:	+/- 3%
Measuring Area:	90%
Response Time:	<1s
Diameter/ Height:	3cm / 6cm
Material:	anti-corrosive ABS PVC
Probe:	FDR measuring technology Stainless Steel IP68 Housing



Soil pH Probe

Range:	3~9 pH
Accuracy:	+/- 0.3pH

Soil EC Probe

Range:	0 ~ 10000uS/cm
Accuracy:	+/- 10uS/cm

Light Sensor

Measuring Range:	0 ~ 200K lux
Spectral Range:	400 ~ 700nm
Accuracy:	+/- 5%
Operating Voltage:	12-24VDC
Output:	4~20mA
Enclosure:	PVC IP65 Water Proof Housing
Application:	Farming, Agriculture, Greenhouse



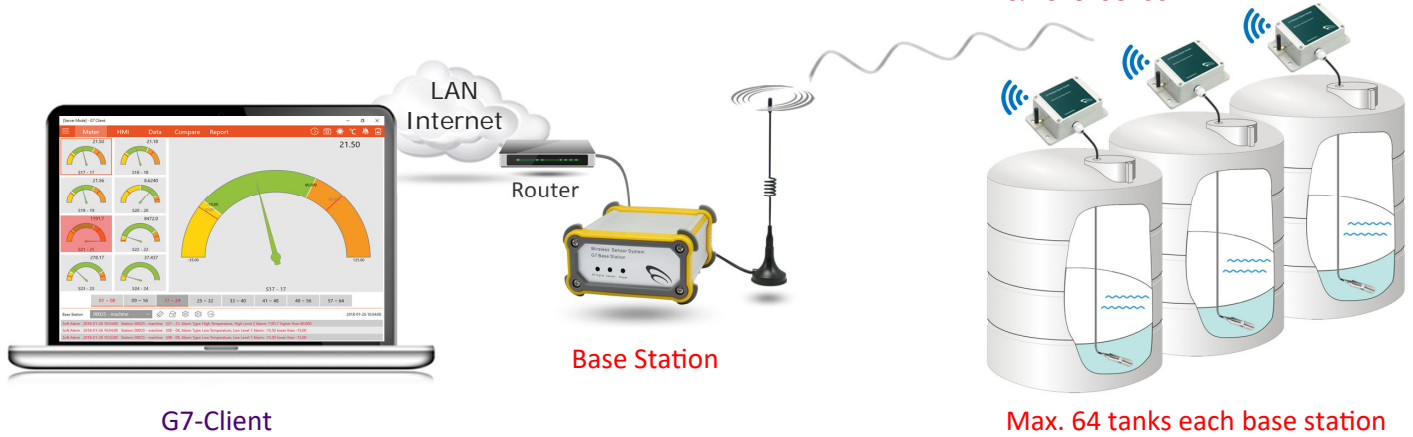
Wireless Oil Tank Level Tracking

Real Time Tank Level Tracking

High & Low Level Alarm

No Cabling, Simple Installation

Free Software - real time level or volume monitoring



Application:

Gas Refueling System - measuring the level or volume

Oil Tanks - real time monitoring of level or volume

Mobile Oil or Gas Tanks - no cable connection is needed from mobile tanks to volume tracking system

Multiple Tanks Monitoring System - one single software is capable of volume tracking > 500 tanks

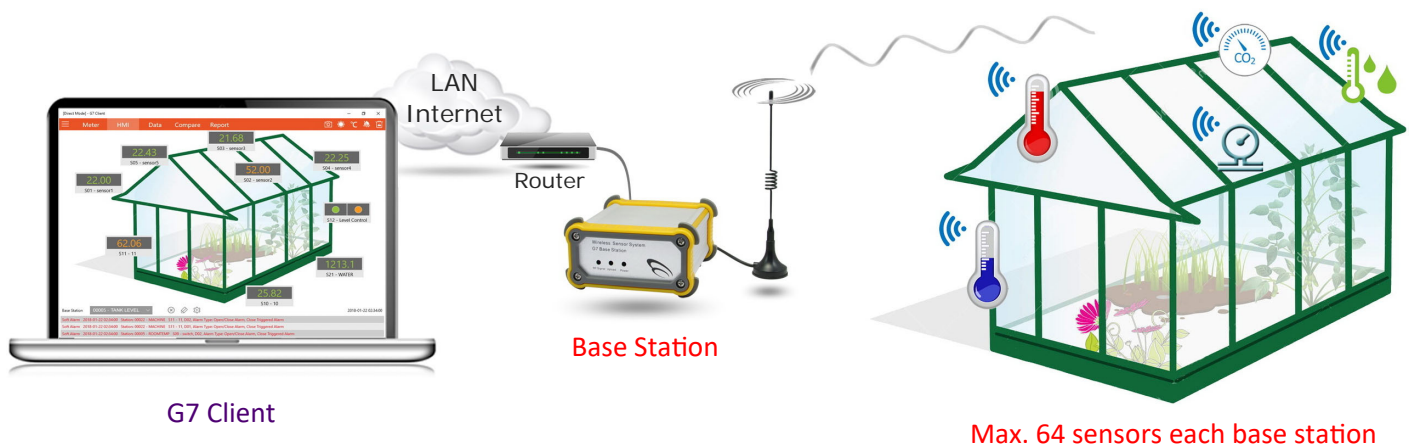
Wireless Greenhouse Environmental Monitoring

Sensors High & Low Level Alarm

No Cabling, Simple Installation

Free Alarm Software - monitoring 128 sensors

Turn on fan when temperature is high (G7-T2-R)



Application:

Greenhouse - no cabling cost, real time tracking of temperature, humidity, CO2, other sensors

Farming - no cabling, easy installation up to 1200m wireless distance

Factory - support industrial sensors e.g. pt100 analog sensor for extreme range

Weight - wireless load cell or weight scale measurement for truck, poultry and storage tanks

Wireless Sensor - Digital Alarm Input

Digital Alarm Input: 2 x Channels
Dry Contact
NO (Normal Open): Closed Alarm Triggered



Simple Installation

- No cabling for wireless transmitter
- 2 wire connection with detector

Digital Alarm Detector

Support any alarm detector with on/off dry contact output

Free Digital Alarm Monitoring Software

- Real Time Alert on alarm & resume normal
- Monitoring max. 320 alarm sensors
- Max. 100 base stations
- Each sensor supports max. 2 alarm inputs
- Sensor battery low level alert
- Audio & Display alerts, Email & SMS Alarm
- Email Alarm sent to max. 5 users mailbox
- SMS Alarm sent to max. 5 users mobile phone
- Digital Alarm On, Off, Resume status in different alert colors
- Alert on wireless sensor communication loss
- Base Station and Sensor Name are user programmable
- Auto fill search base station or sensor ID and name

G7-D2 Wireless Digital Alarm

supports 2 channels of digital alarm inputs

It is widely used in remote alarm of oil tank level switch or cold food fridge door open.

Low Power Design

Micro-controller supports sleep mode for 3-5 years long operation in battery.

Instant Alarm

It provides instant alarm even in sleep mode.

- Programmable repeated alarm interval
- Programmable number of repeated alarms
- Low battery alarm

Digital Input Status

Keep track of input status in interval

Alert user when alarm triggers or resumes normal

LAN/Internet Connection

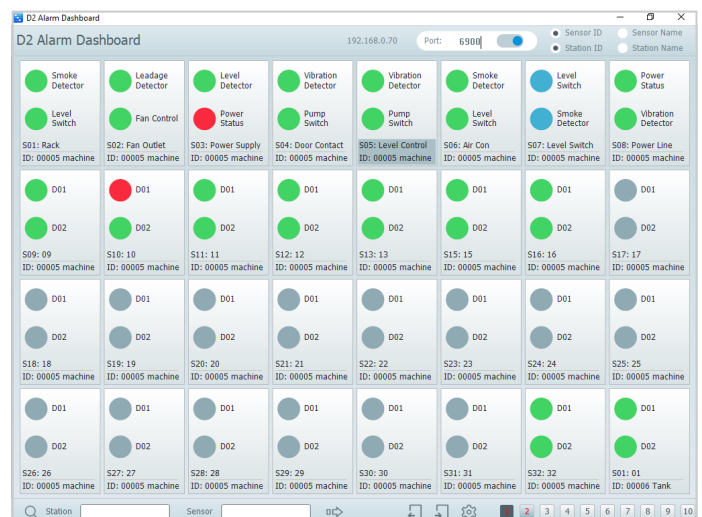
Base Station sends alarm over LAN/Internet instantly

Both fixed IP and DDNS are supported

Support TCP Modbus for BMS integration

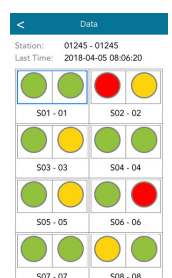
Optional Onboard Relay

G7-D2-R turns on devices e.g. fan or siren triggered by alarm.



D2 Alarm Dashboard

- Windows 10
- iPad, iPhone
- Android Phone



Wireless Oil Tank Level Alarm Monitoring

Instant High & Low Level Alarm

No Cabling, Simple Installation

Low Equipment Cost

Free Alarm Software - real time level monitoring

**G7-D2 Wireless Alarm Transmitter
& High Low Level Switch**



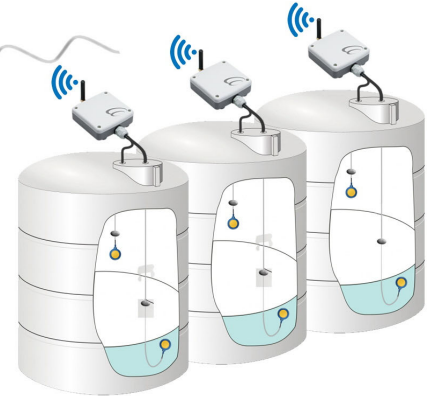
G7-D2 Dashboard

LAN
Internet

Router



Base Station



Max. 56 tanks each base station

Application:

Gas Refueling System - eliminating overflow or under refuel problem

Oil Tanks - real time alert on below or above normal levels

Mobile Oil or Gas Tanks - no cable connection is needed from mobile tanks to monitoring system

Multiple Tanks Monitoring System - one single software is capable of monitoring > 500 tanks

Wireless Water Leakage Alarm System

Instant Water Leak Alarm

No Cabling, Simple Installation

Free Alarm Software - real time water leak alarm

Turn on pump or siren when leak is detected (G7-D2-R)

G7-LK Wireless Water Leakage Sensor

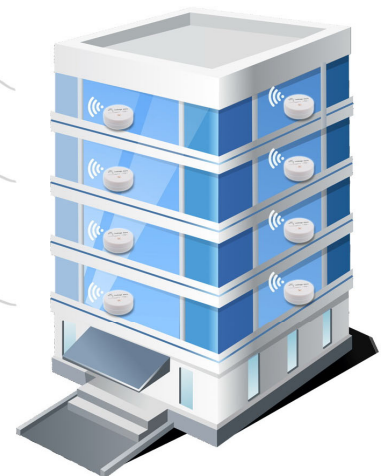


G7-D2 Dashboard

LAN
Internet



Max. 100 Base Stations



Max. 500 wireless water leakage sensors

Application:

Hotels - no cabling cost, real time monitoring of water leak in max. 500 rooms

Hospital - no cable installation, minimize loss of medical equipment or material in water leak

Factory - wireless sensor can be installed anywhere e.g. production line, package or storage

Warehouse - complete environmental monitoring together with wireless temperature & humidity sensors

Wireless Sensor - Modbus RS485

RS485 Port:	Modbus Protocol
Battery:	3.6V, 14000mAh
Operation Period:	> 5 years (upload: 30 min)
Internal Power Output:	12VDC for Modbus Meter with max. 40mA rating

Internal Power Output

It provides on-board power output 12VDC for external sensor or meter in different applications e.g. flow meter.

Warm Up Time

Stabilize external sensors reading before capturing data.

Low Power Design

Microcontroller supports sleep mode for battery operation.

Programmable

Modbus Data Type & Registers Address

Wireless Modbus Flow Meter



G7-MB Wireless Modbus Sensor

Modbus Data Registers (Address Programmable)

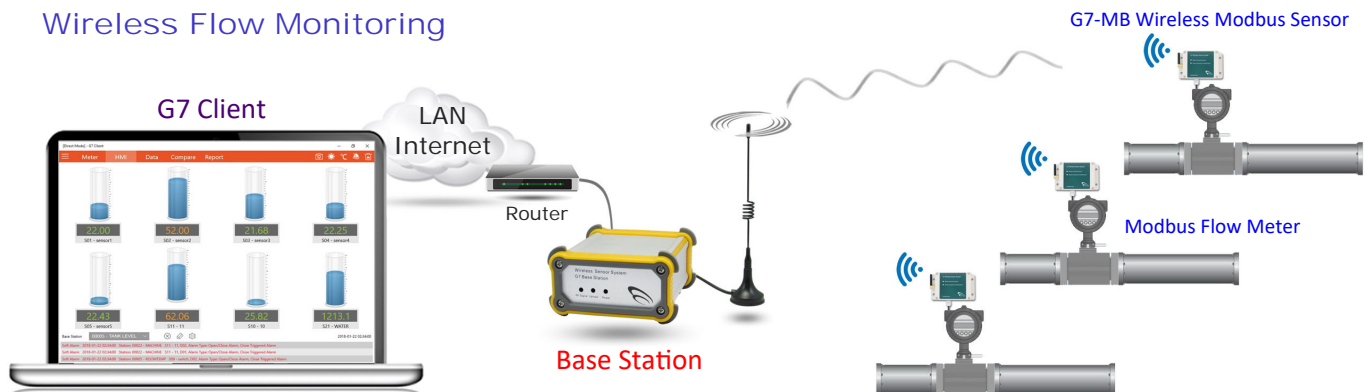
1 x Floating Point Modbus Data Register

☒ instant flow rate

1 x Integer Modbus Data Register

☒ total flow volume

Wireless Flow Monitoring



Wireless Modbus Soil Sensor



G7-MS Wireless Modbus Sensor

Modbus Data Registers

2 x Floating Point Modbus Data Register

- ☒ soil temperature & moisture
- ☒ soil EC & moisture
- ☒ soil EC & pH
- ☒ water level & temperature

Wireless Modbus Level & Temperature Sensor



Wireless Sensor - Solar Powered

Integrated Solar Panel: 1W (200mA 5V)

Li Rechargeable Battery: 3400mA 18650

Onboard Circuit: Overcharge Protection

Non-Stop Operation

Low Maintenance Fee

No need to change battery
Perfect for outdoor site

1W Solar Panel



Power Options for all wireless sensors

1. Standard - 3400mA non-rechargeable low leakage battery (e.g. G7-T2, G7-H2)
2. Extended - 14000mA non-rechargeable low leakage battery (e.g. G7-T2Ex, G7-H2Ex, G7-AD, G7-MB)
3. Solar Power - 1W solar panel, 3400mA rechargeable battery, onboard overcharge protection (e.g. G7-T2SP, G7-H2SP, G7-ADSP, G7-MBSP)
4. Solar Power - 6W external solar panel, 6000mA rechargeable battery, onboard overcharge protection (e.g. G7-ADXP, G7-MSXP)

Solar Power Wireless Sensors for Agriculture

Wireless Soil Moisture Sensor

Wireless Soil EC Sensor

Wireless Soil pH Sensor

G7-ADSP-SH

Soil Moisture Probe

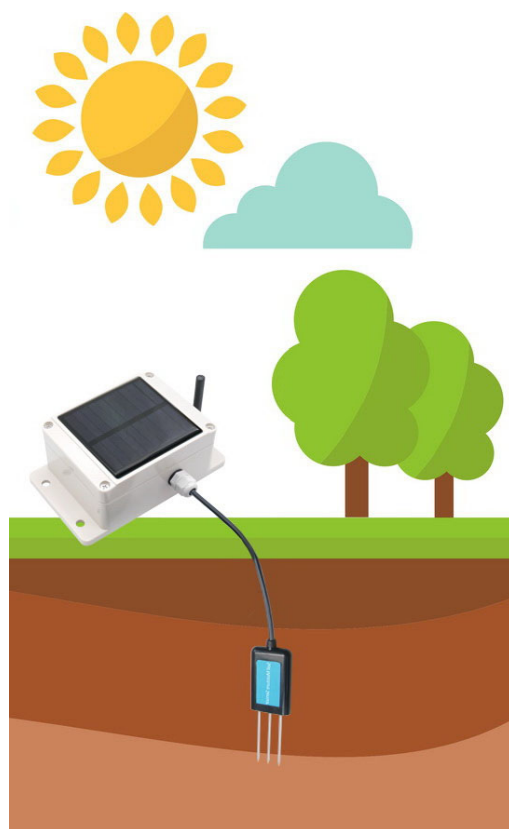
Range: 0 ~ 100%
Accuracy: +/- 3%
Measuring Area: 90%
Response Time: <1s
Diameter/ Height: 3cm / 6cm
Material: anti-corrosive ABS PVC
Probe: FDR measuring technology
Stainless Steel IP68 Housing

Soil pH Probe

Range: 3~9 pH
Accuracy: +/- 0.3pH

Soil EC Probe

0 ~ 10000uS/cm
+/- 10uS/cm



Solar Power Wireless Level Sensor

G7-ADSP-LS



External Solar Panel

How G7 Client works?

Win10, iOS, Android

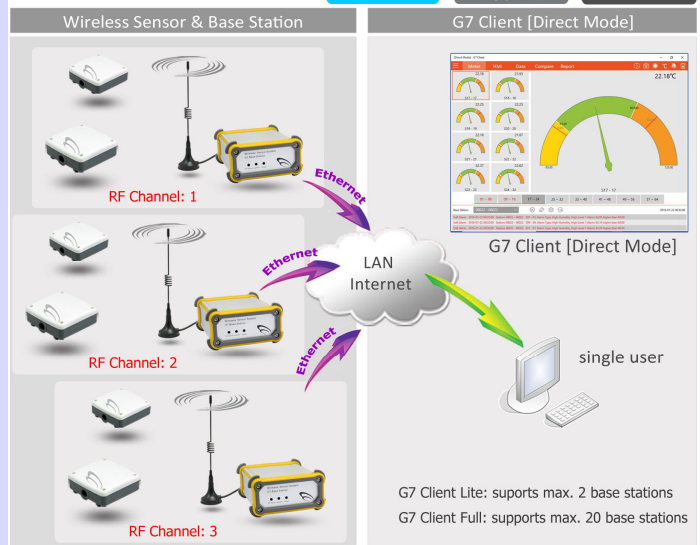
<Direct Mode - free>

- Each base station receives data from max. 64 wireless sensors
- Each base station uploads sensors to one single client user
- G7 Client Lite [Direct Mode]
 - * Each single client user accesses max. 2 base stations
- G7 Client Licensed [Direct Mode]
 - * Each single client user accesses max. 20 base stations
- Local storage of incoming data from base stations
- Graphic display of both live and historical data

Alarm

- Alarm email delivered from G7 Client PC
- Single set of sensor alarm setting

Direct Mode

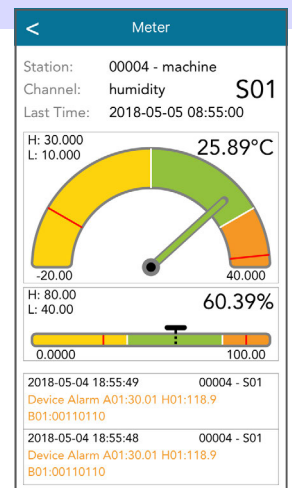


Free G7 Client Lite for Windows 10, iPad, iPhone & Android Phone

- Max. 2 base stations
- Each base station supports max. 64 sensors
- Sensor can be temperature, humidity, digital alarm, analog sensor
- Audio & Display alerts on alarm, Email Alert

How to upload data over mobile network?

- * by connecting to 3G/4G router
- * insert SIM card
- * upload data via 3G/4G mobile network



INTEGRATION

Support third party system integration:

- TCP Modbus
 - via industrial standard Modbus data registers
 - TCP Modbus tool is bundled free
 - Data can be accessed by other SCADA directly
- API driver
 - API dll for third party development
- REST API
 - Web Service API for third party web portal
- Centre Software
 - Data received and saved into text file



Easy Installation

- 1) Connect Base Station to Internet
- 2) Setup network properties
- 3) Download G7 Client App
- 4) Temperature Humidity Graphics View

